

## Diagnostic Trouble Code (DTC) 1-2: ABS Pump Motor Circuit Problem

**CAUTION:** Use only the digital multimeter to check the system.

**NOTE:** If a malfunction is detected, this code appears and the fail-safe function is activated. The ABS indicator light comes ON after restarting the engine until the DTC is erased (by disconnecting the ABS B2 (15 A) fuse in the under-hood fuse/relay box for three seconds).

### Pre-test steps:

- Check ABS MOTOR (50A) fuse
- Check No. 3 REAR DEFROSTER RELAY, COOLING FAN RELAY (15 A) fuse in the under-dash fuse/relay box.
- Check ABS UNIT (7.5A) fuse in the under-hood fuse/relay box.
- Check for loose under-hood fuse/relay box connectors.

— With engine running, ABS indicator light is ON.  
— With service check connector jumped (see page 19-51), DTC 1-2 is indicated.

Remove and check the ABS pump motor relay (page 19-85).

Does it work properly?

NO

Replace the ABS pump motor relay.

YES

Connect the No.1 and No.2 terminals using a jumper wire.

**NOTE:** Use a jumper wire with a bare wire thickness of at least 2 mm.

Does the pump motor run?

NO

(To page 19-57)

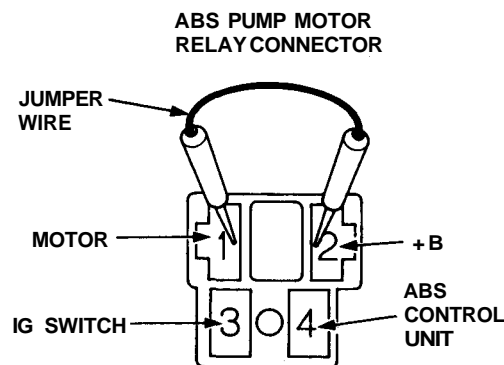
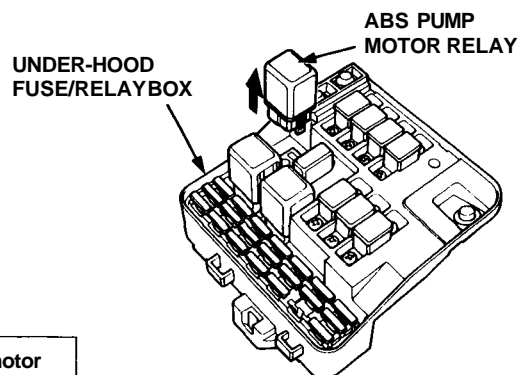
YES

Disconnect the jumper wire.

Remove the ABS UNIT (7.5 A) fuse in the under-hood fuse/relay box.

Turn the ignition switch ON.

(To page 19-56)



View from terminal side.

(cont'd)

# Troubleshooting

## Flowcharts(cont'd)

(From page 19-55)

Check for voltage between the under-hood fuse/relay box ABS UNIT fuse A terminal and body ground.

Is there approx. 10V?

NO

Repair open in WHT/BLU wire between the ABS UNIT (7.5 A) fuse in the under-hood fuse/relay box and ABS control unit.

YES

Reinstall the fuse to the under-hood fuse/relay box.

Disconnect the ABS pump motor connector.

Check for voltage between the ABS pump motor relay No.1 terminal and body ground.

Is there battery voltage?

NO

Replace the under-hood fuse/relay box.

YES

Check for voltage between the No.3 terminal and body ground.

Is there battery voltage?

NO

Repair open in YEL/BLK wire between the No. 3 (15 A) fuse in the under-dash fuse/relay box and ABS pump motor relay.

YES

Reinstall the ABS pump motor relay.

Disconnect the 18P (cars with TCS: 20P) connector from the ABS control unit.

Check for voltage between the ABS control unit connector No. 18 (cars with TCS: No. 21) (YEL/RED) terminal and body ground.

Is there battery voltage?

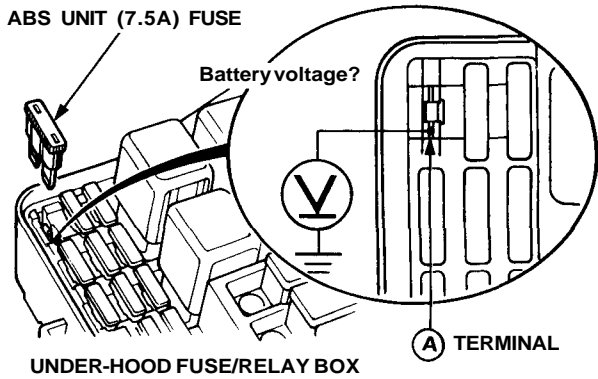
NO

Repair open in YEL/RED wire between the ABS pump motor relay and ABS control unit.

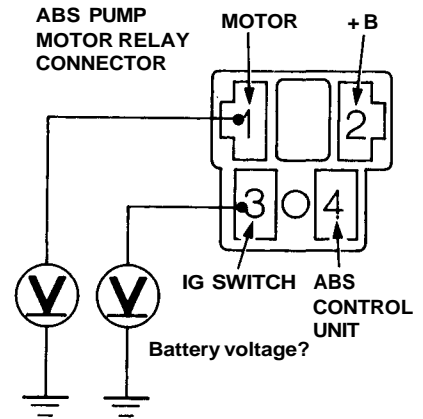
YES

Check for loose ABS control unit connectors. If necessary, substitute a known-good ABS control unit and recheck.

ABS UNIT (7.5A) FUSE

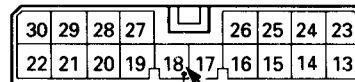


ABS PUMP MOTOR RELAY CONNECTOR



View from terminal side.

Cars without TCS  
18P CONNECTOR



Battery voltage?



YEL/RED  
(PMR)

Cars with TCS  
20P CONNECTOR

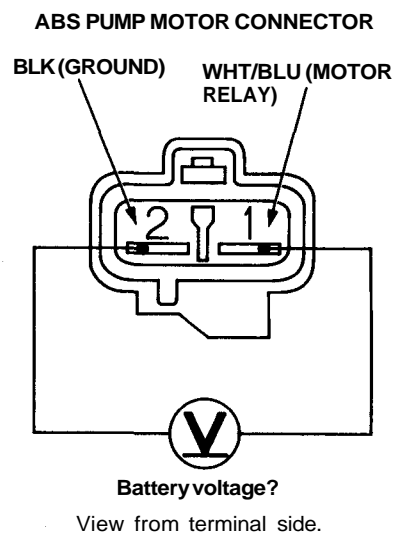
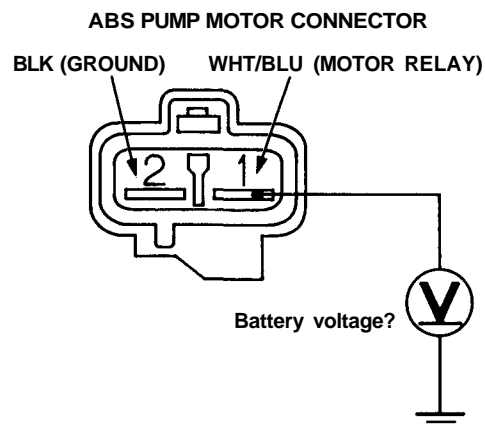
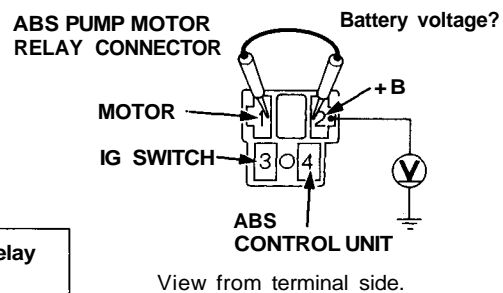
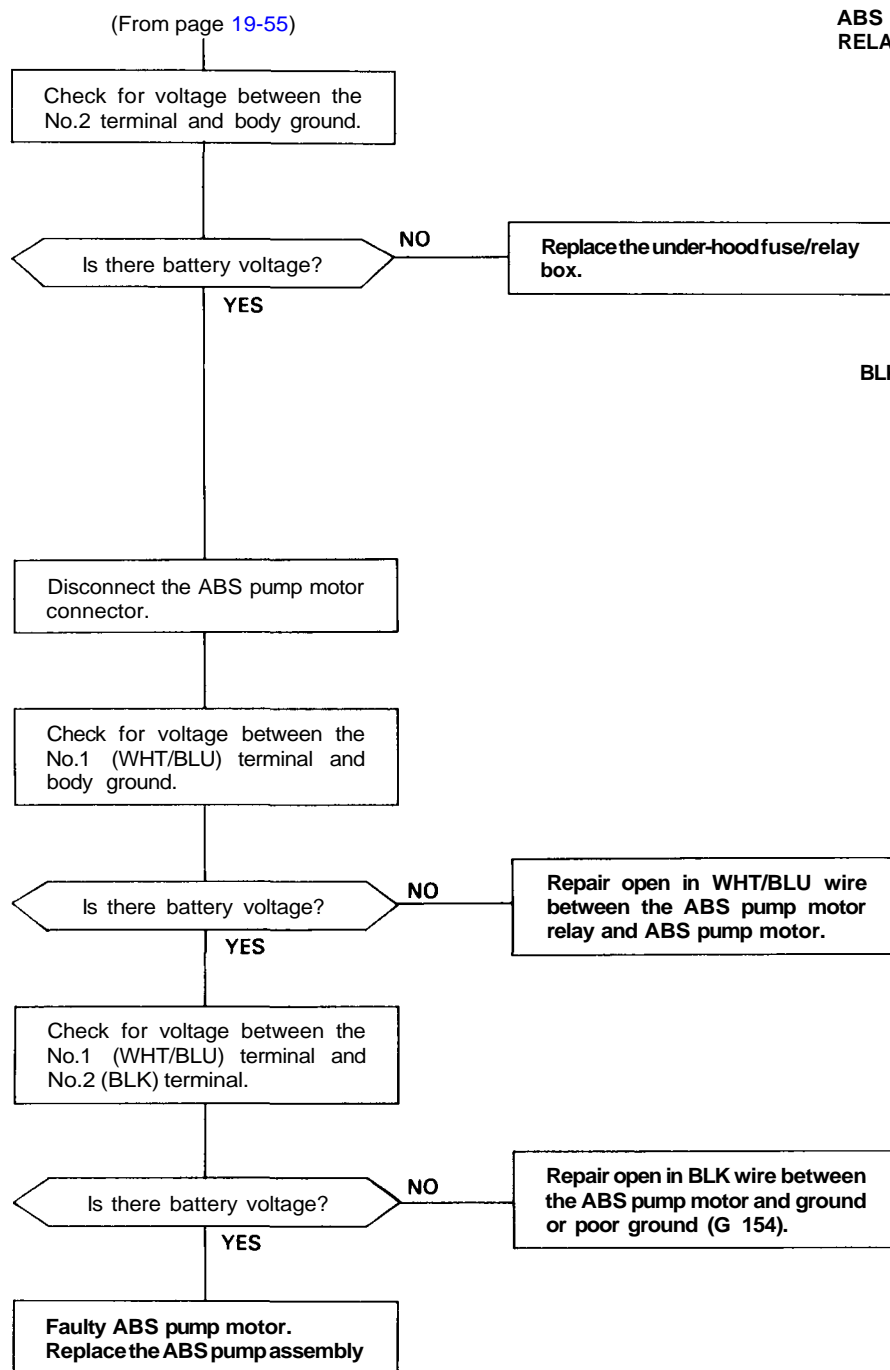


Battery voltage?



YEL/RED  
(PMR)

View from ABS control unit terminal side.



(cont'd)